

# Flex Builder 3

Daniel Dura

[ddura@adobe.com](mailto:ddura@adobe.com)

Platform Evangelist - Adobe

The Adobe Flex logo, consisting of the letters 'F' and 'x' in a white, bold, sans-serif font, set against a dark gray square background with a subtle radial gradient. The background of the entire slide is a high-angle photograph of the Earth from space, showing the curvature of the planet and a layer of white clouds over a blue ocean.

**Fx**



# Flex Ecosystem

## Flex SDK (Soon Open Source)

**MXML and ActionScript 3.0**

**Flex Framework and Class Library**

**Compiler & Debugger**

## Flex Charting **Extensible Charting Components**

## LiveCycle Data Services

**Message Service**

**Data Management Service**

**RPC Services**

## Flex Builder 2

**Visual Layout**

**Code Hinting**

**Debugging**

**Skinning and Styling**



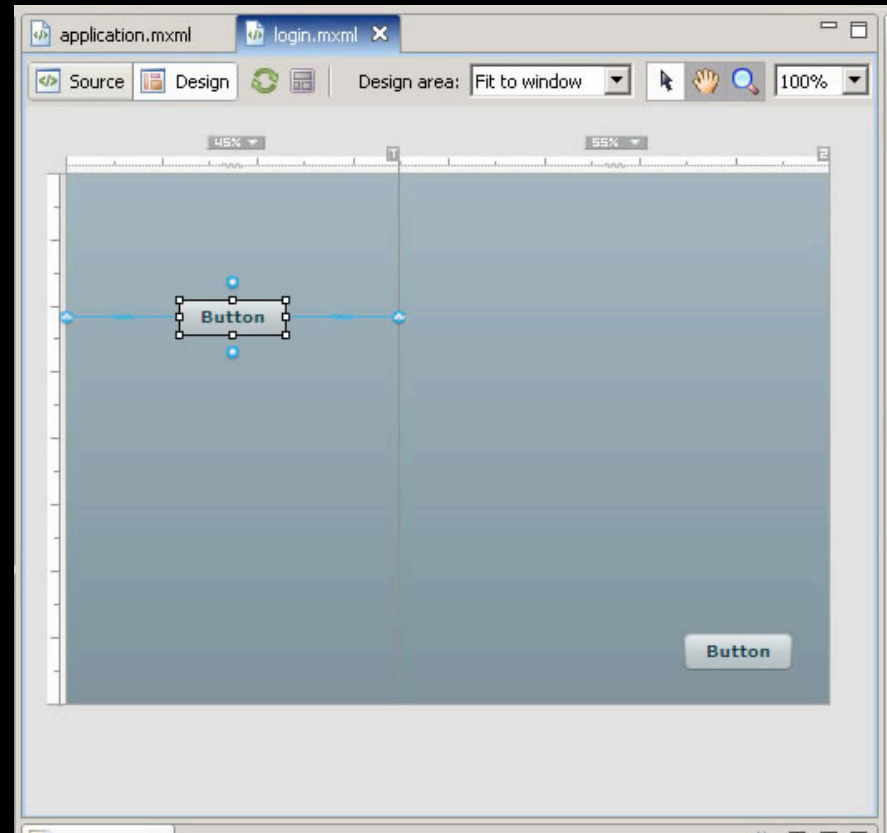
# Flex Builder

- Code Hinting
- Incremental Compilation
- Project Support
  - Project Dependencies
  - Library Projects
  - ActionScript Projects
- Debugging
- Visual Layout
  
- Both Standalone and Plugin Versions



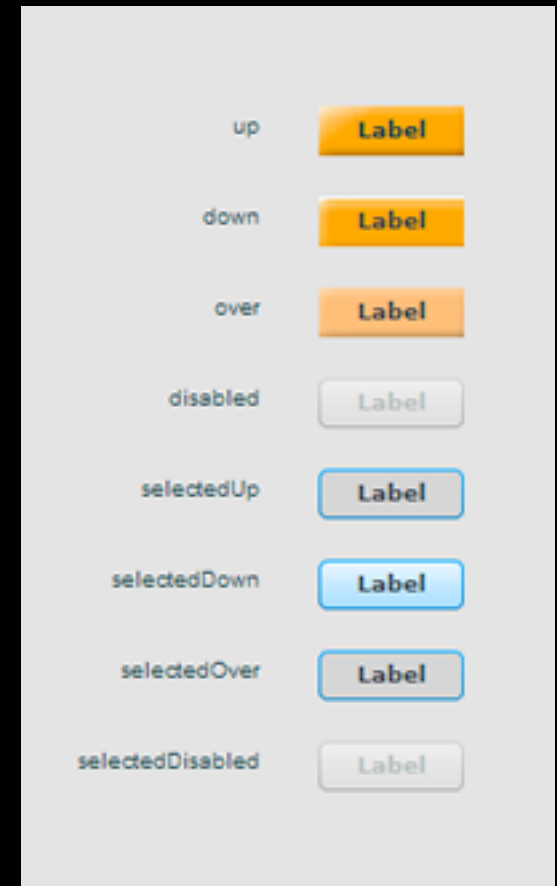
# Enhanced Constraints

- Constraint Grids
  - ConstraintRow
  - ConstraintColumn
- Works in Panel, Canvas, Modules, and Application
- Design View Support
- Replaces VBox, HBox, etc.



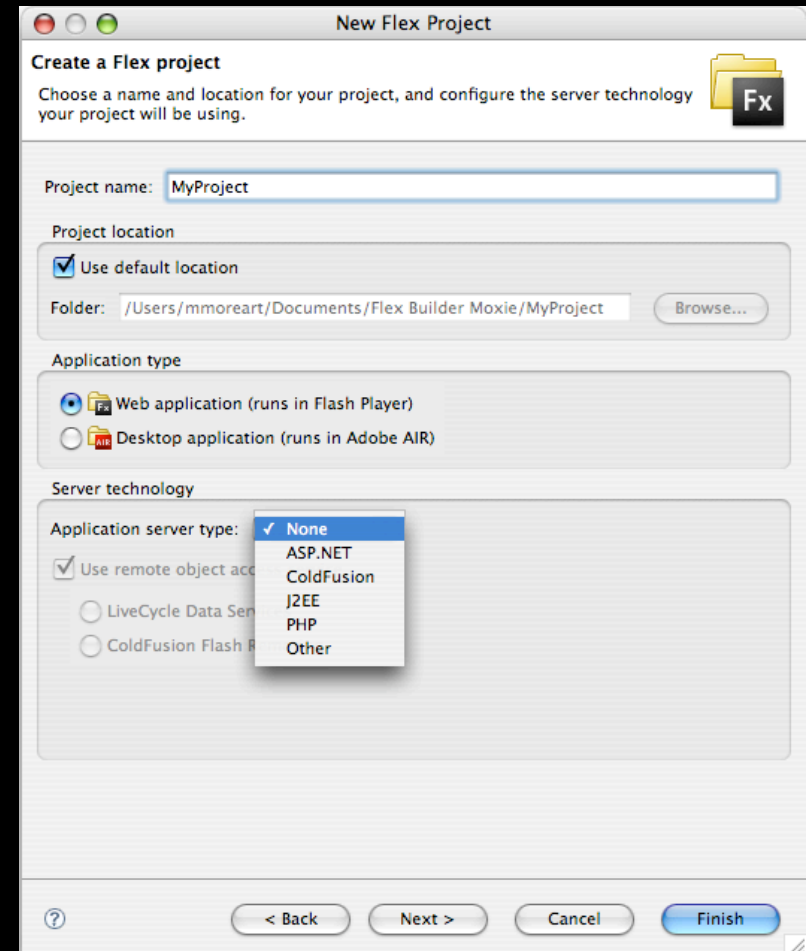
# CSS Design View

- Visually Edit Component CSS
- Uses Design View



# Server Project Wizards

- CRUD Generation for Database
- Server Support
  - ASP.NET
  - JAVA
  - PHP



# Web Service Introspection Wizard

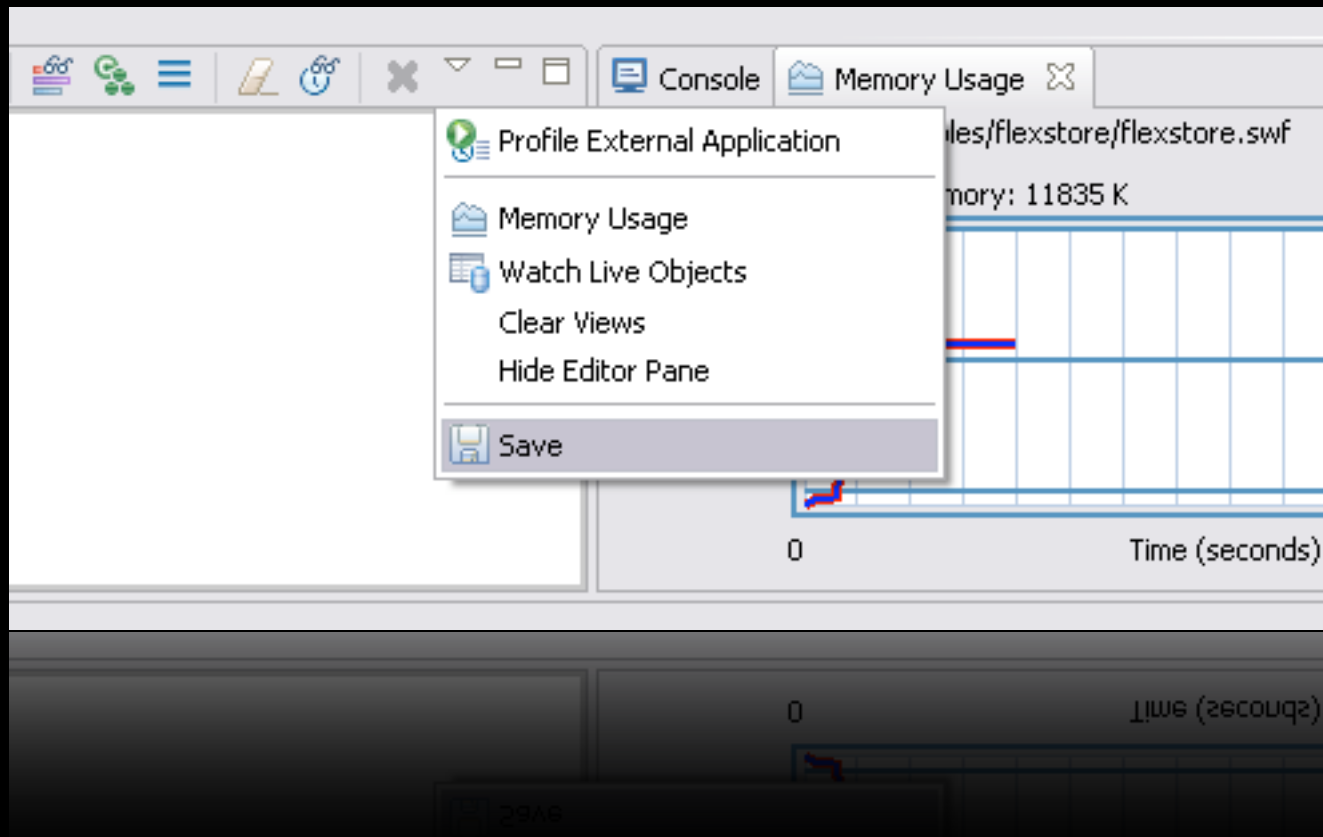
- Generates Class for WSDL
- Update when WSDL changes





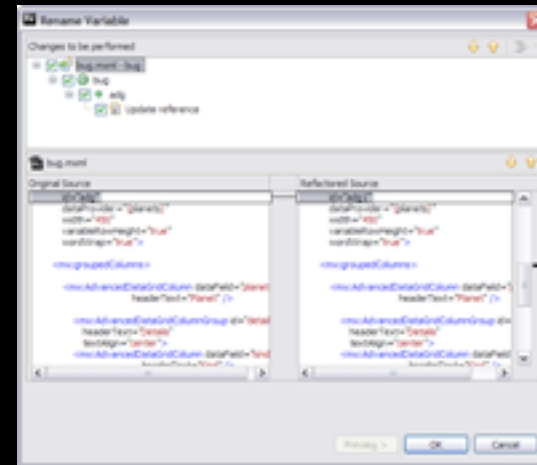
# Profiler

- Performance Profiling
- Memory Profiling



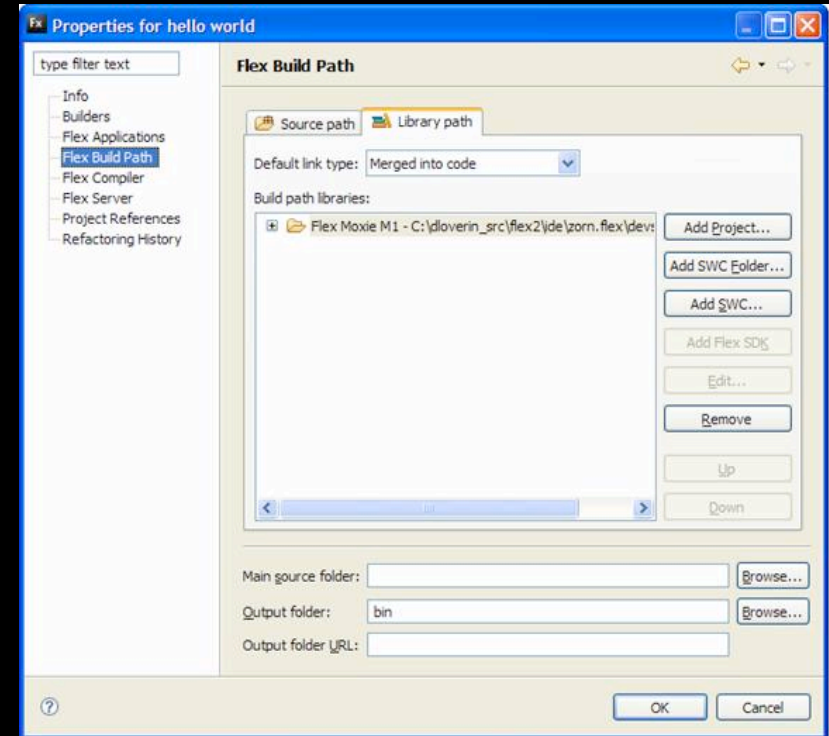
# Code Refactoring

- Visually Edit Component CSS
- Uses Design View



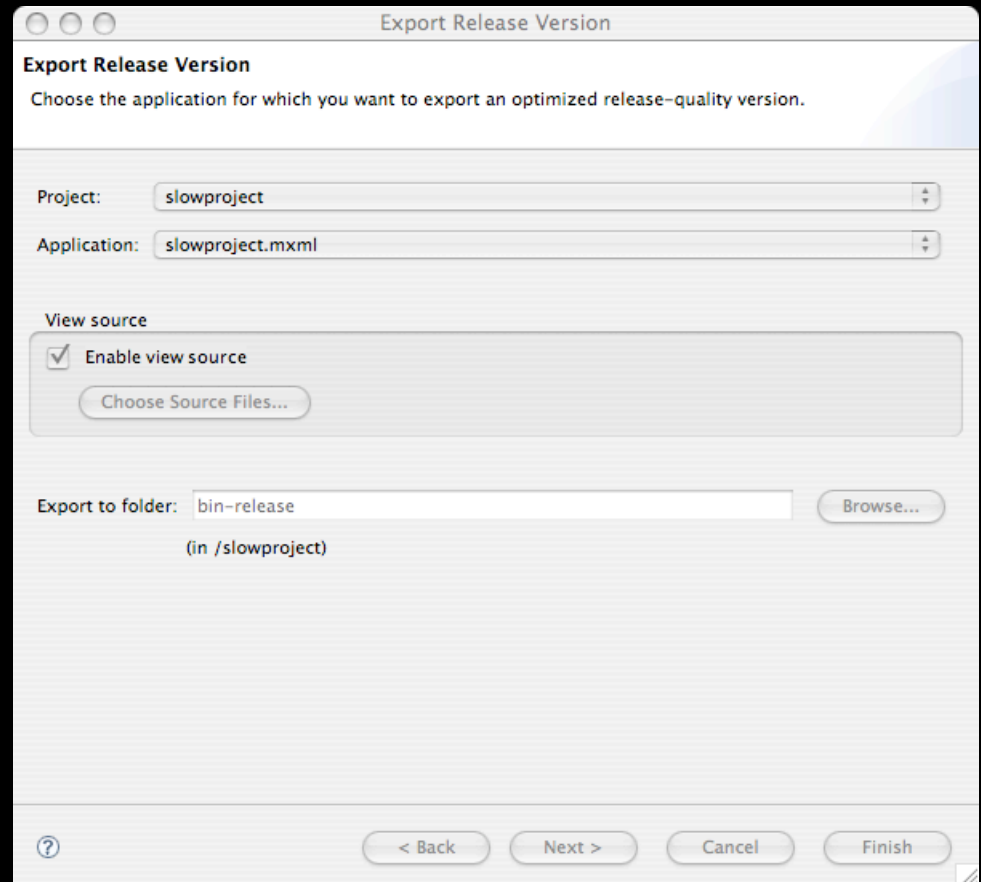
# Framework Runtime Shared Library

- Uses Flash Player Cache
- Signed RSL Loads Across Domains
- Only Adobe Can Sign RSLs
- Framework RSL Reduces SWF Size



# Export Release Wizard

- Exports SWF Without Debugging
- View Source
- AIR Packaging and Signing



The logo consists of the letters "AIR" in a bold, white, sans-serif font, centered within a solid red square. The red square has a slight gradient and a thin white border at the bottom.

**AIR**

ddura@adobe.com

<http://www.danieldura.com>